

# Puzzles



## Material necessário:

- impressora
- papel
- cartão
- cola
- tesoura

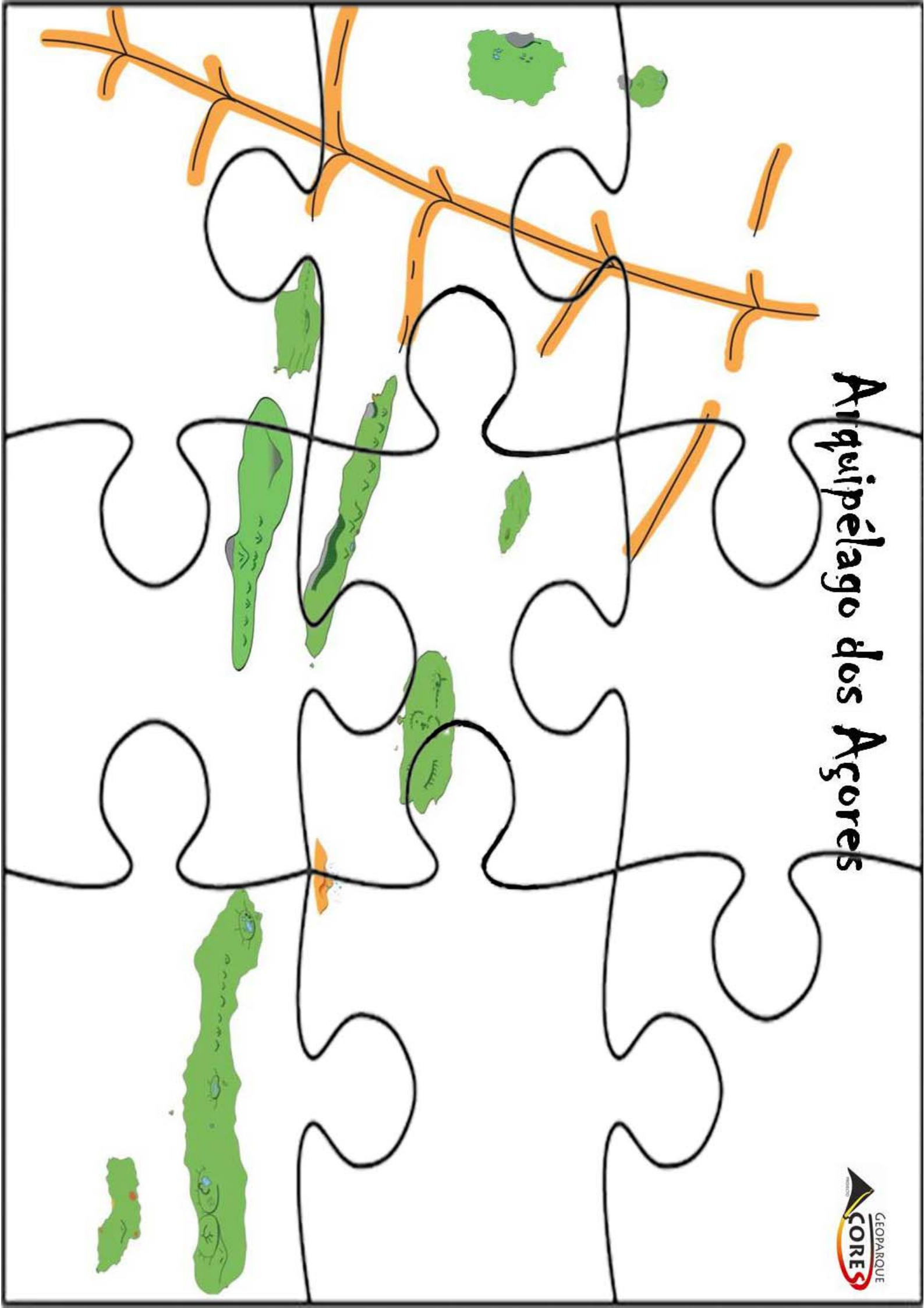
## Instruções de montagem:

- (pede ajuda a um adulto)
- imprime os puzzles
- cola a impressão no cartão
- recorta as peças dos puzzles

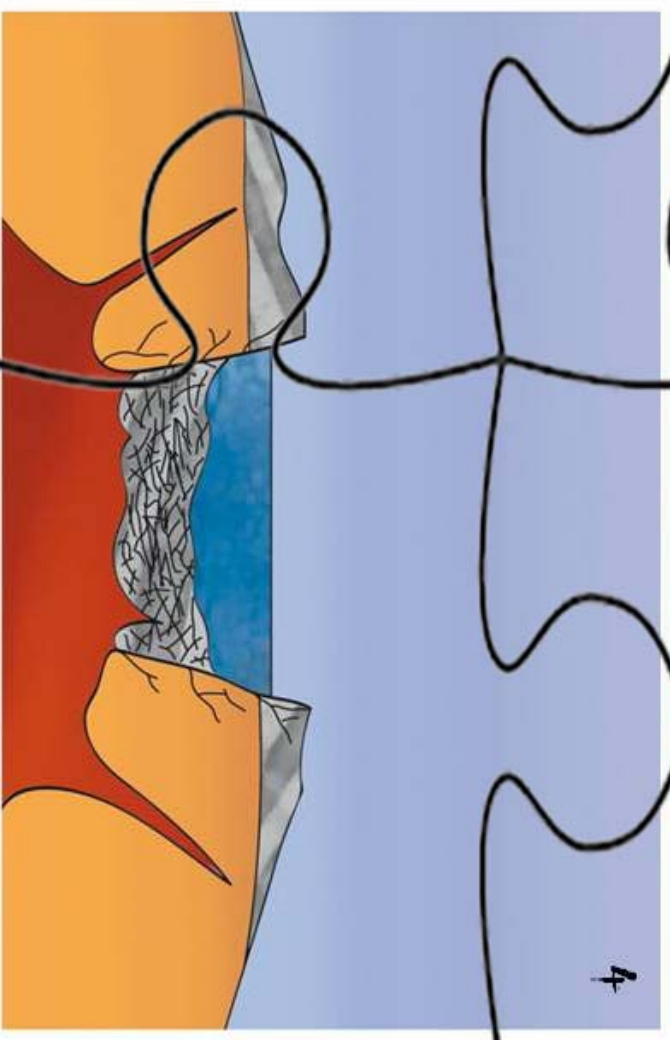
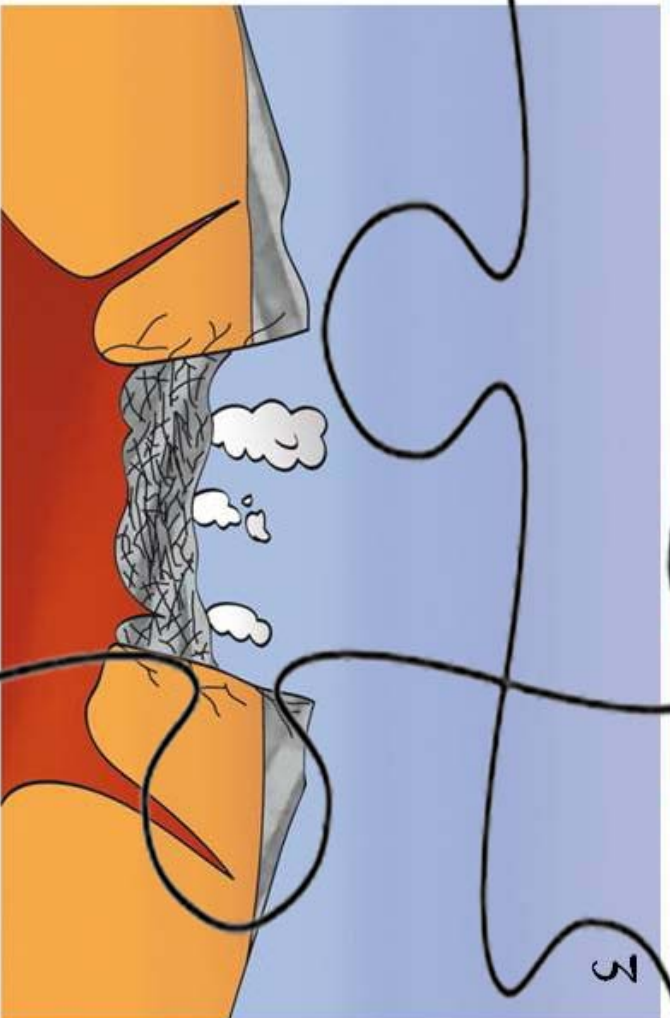
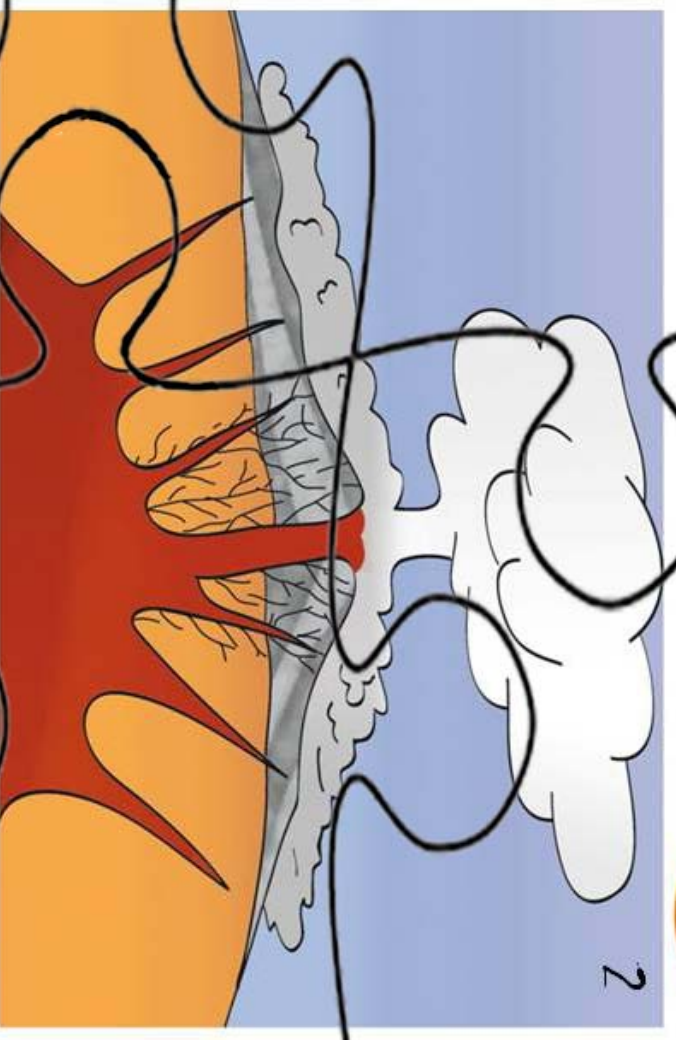
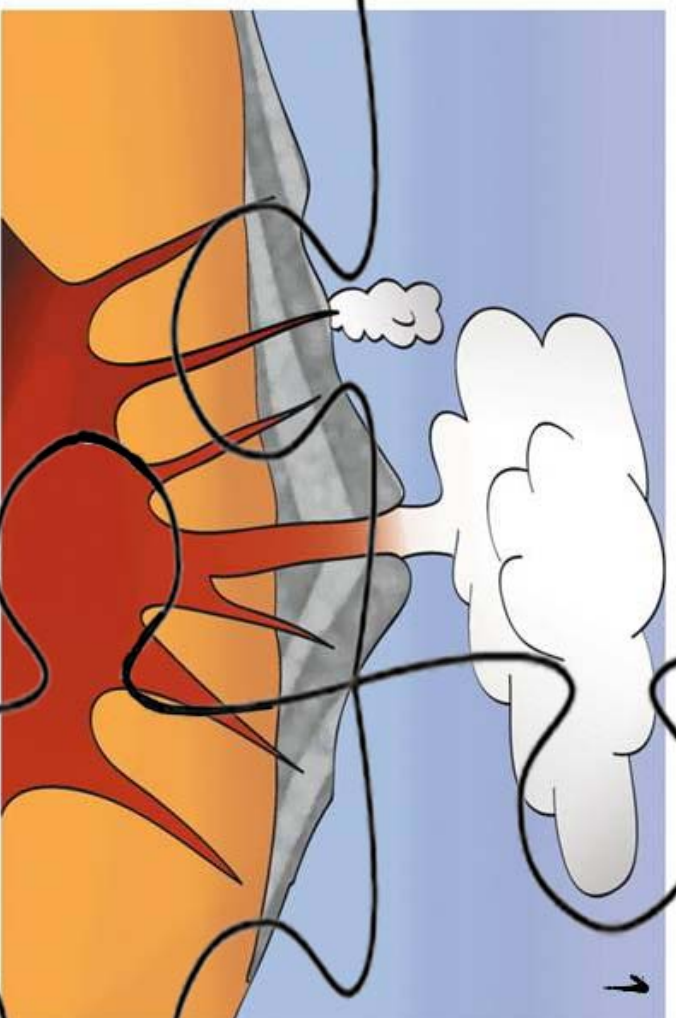
Os puzzles estão prontos!

Diverte-te

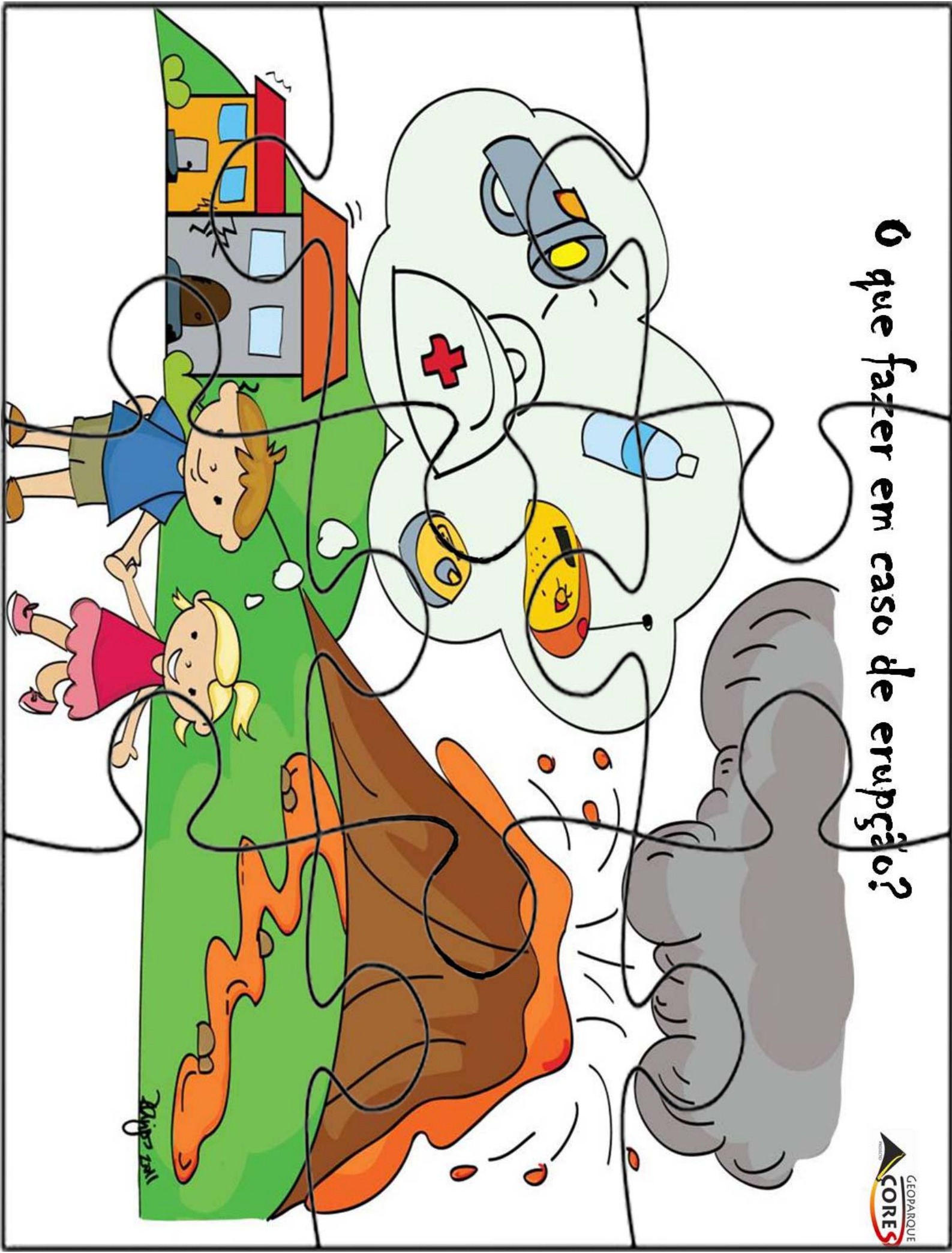
# Arquipélago dos Açores



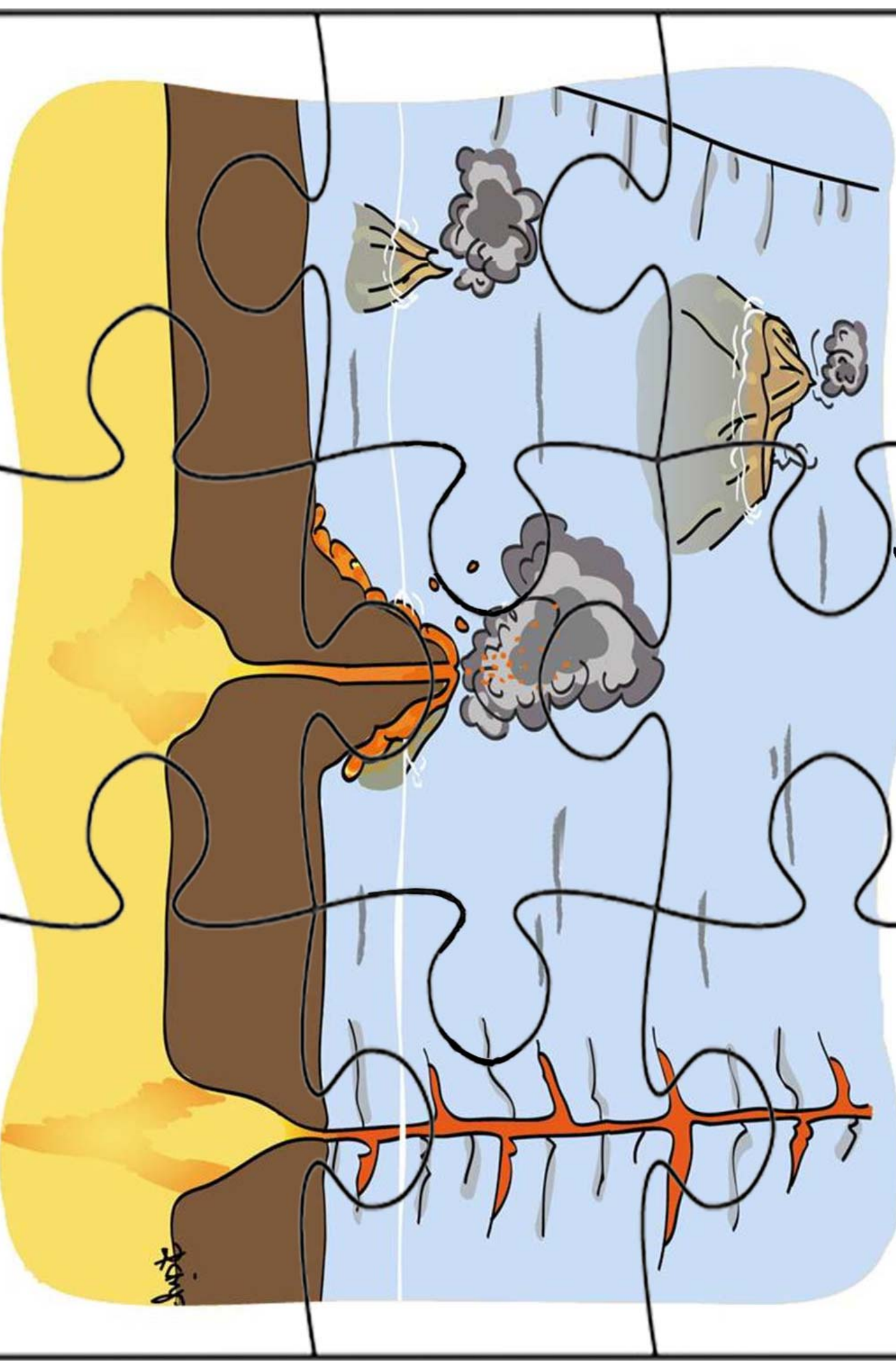
# Formação de caldeira vulcânica



O que fazer em caso de erupção?

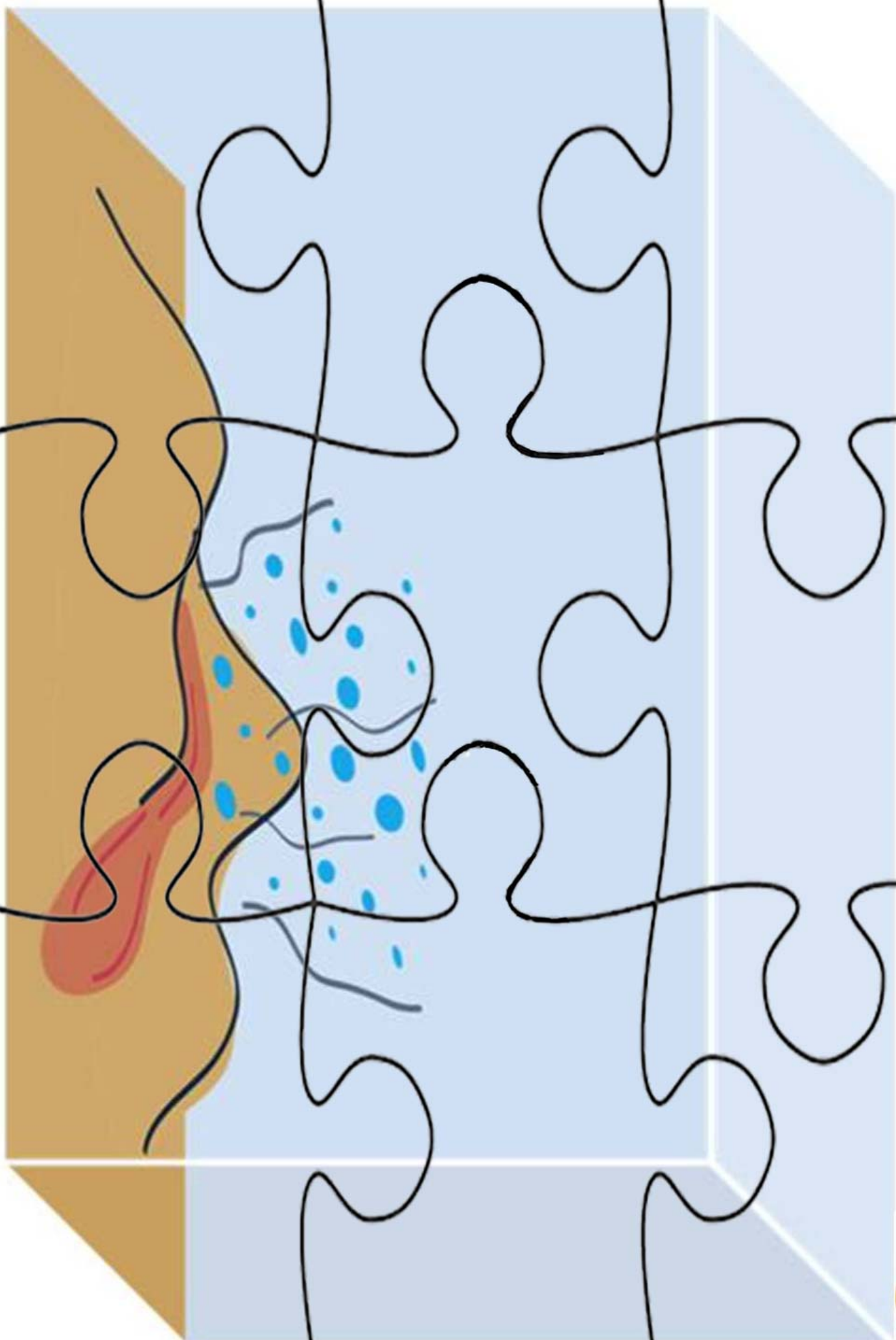


# Formação de ilha vulcânica



Just

# Vulcão submarino



Vulcão

